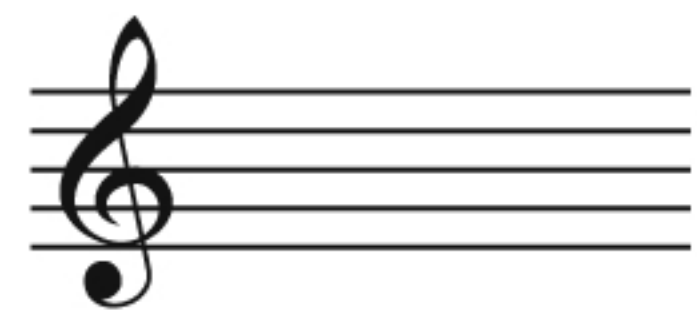


Accidentals

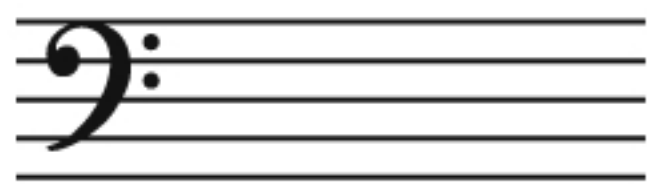


Sharp Flat Natural

Clefs



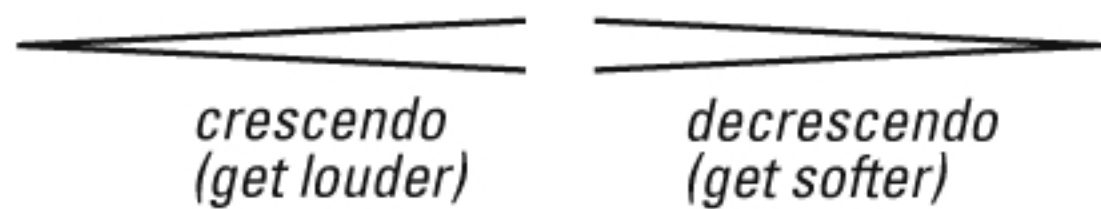
Treble clef



Bass clef

Dynamics

pp *p* *mp* *mf* *f* *ff*
pianissimo piano mezzo piano mezzo forte forte fortissimo
(very soft) (soft) (moderately soft) (moderately loud) (loud) (very loud)



crescendo
(get louder)

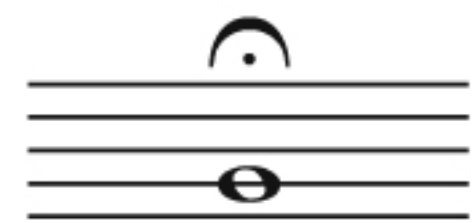
decrescendo
(get softer)

Dotted notes



Dotted half (3 beats) Dotted quarter (1 1/2 beats) Dotted eighth (3/4 beat)

Fermata



Hold

Articulations



Accents

Staccato
(detached)

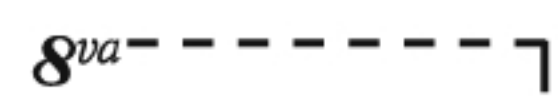
Tenuto
(sustained)

Notes



Whole note (4 beats) Half note (2 beats) Quarter note (1 beat) Eighth note (1/2 beat) Sixteenth note (1/4 beat)

Octave changes

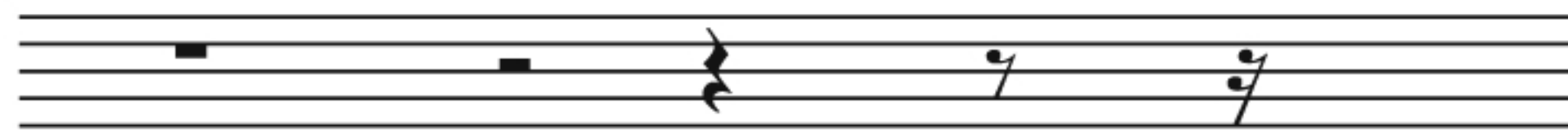


(1 octave higher)

(1 octave lower)



Rests



Whole rest
(4 beats)

Half rest
(2 beats)

Quarter rest
(1 beat)

Eighth rest
(1/2 beat)

Sixteenth rest
(1/4 beat)

Tie



Time signatures



2 quarter-note beats
per measure

3 quarter-note beats
per measure

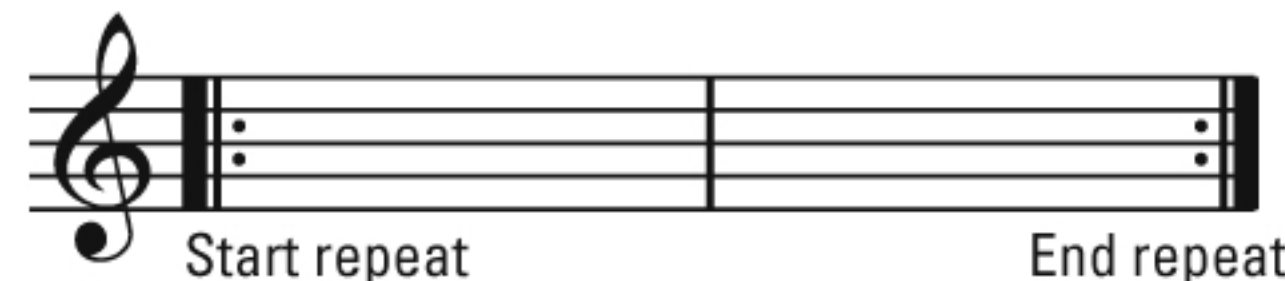
4 quarter-note beats
per measure

6 eighth-note beats
per measure

Triplets



Repeats



Slur

