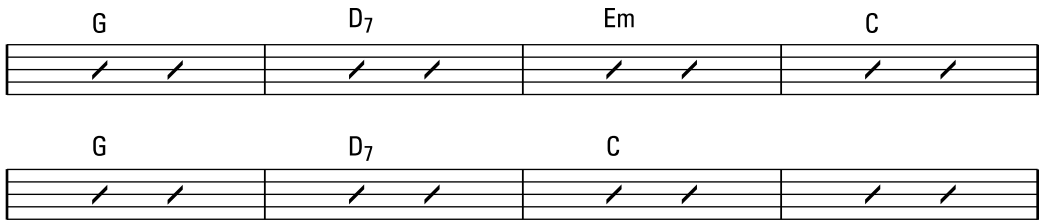




TAB 4-1: Strumming along to “This Land”-type chord progression using G, C, and D7 chords.



TAB 4-2: Strumming along to “Wagon Wheel”-type chord progression using G, C, D7, and Em chords.

The image shows a guitar tablature for a 4/4 time signature, divided into four measures corresponding to the chords G, C, D7, and Em. Each measure contains six strings with specific fret numbers and picking directions. The picking directions are: t (thumb), m (middle), i (index), and t (thumb).

Measure	Chord	String 6	String 5	String 4	String 3	String 2	String 1
1	G	0	0	0	0	0	0
2	C	0	2	2	0	0	0
3	D7	0	0	2	2	0	0
4	Em	2	0	0	2	0	0

Picking directions for each string in each measure:
 Measure 1: t, m, t, m, t, m
 Measure 2: t, m, t, m, t, m
 Measure 3: t, m, t, m, t, m
 Measure 4: t, m, t, m, t, m

TAB 4-3: Playing the pinch pattern for the G, C, D7, and Em chords.

G

C

G

D7

G

TAB 4-4: Playing pinch patterns to accompany "Will the Circle Be Unbroken."

G

4/4

t m t m t m t m t m t m t m

t t t t t t t t

C G

t m t m t m t m t m t m t m t m

t t t t t t t t

t m t m t m t m t m t m t m t m

t t t t t t t t

D7 G

t m t m t m t m t m t m t m t m t m

t t t t t t t t

TAB 4-5: Playing pinch patterns to accompany "Long Journey Home."